

The graphic features a white speech bubble on the left containing the text 'Atherstone Compliance'. To its right is a smaller, light green speech bubble containing the text 'Deep Rooted for Lasting Purpose'. Below these bubbles is a horizontal splash of ink in shades of blue and pink. The background is white.

Atherstone Compliance

Deep Rooted for Lasting
Purpose

INTRODUCTION

Atherstone Compliance is a trusted and proven partner in the compliance space.

Atherstone possesses extensive experience, deep industry knowledge and commitment to deliver exceptional compliance solutions.



STRENGTHS AND EXPERTISE

Atherstone Compliance's strengths are derived by partnering and teaming with professionals of vast industry experience, handling diverse client portfolio and with proven track record of success.

Atherstone Compliance's expertise is in navigating complex regulatory environments and its inert ability to tailor solutions for various industries and business types

GLOBAL
COMPLIANCE
LANDSCAPE

Navigate the global compliance landscape, which is increasing in complexity and stringent regulations and address the challenges faced by businesses.

Atherstone Compliance team through its partner associates, have in-depth understanding of these challenges and with its proactive approach help clients get the best of compliance management.

▶▶ Atherstone

Atherstone Compliance's independent approach acts as a key differentiator, allowing unbiased and objective based compliance assessments with solutions for businesses.

Our team is committed to provide expert independent advice, assist in audits and their recommendations to ensure clients always receive transparent and trustworthy compliance services.

Independent Approach

Atherstone Compliance's focused approach aids in developing tailored Compliance Solutions for the unique needs of clients.

Our Compliance Advisory and Support team has special ability to identify specific compliance requirements, design targeted strategies and implement comprehensive programs to address them effectively.

FOCUSED SOLUTIONS



METICULOUS COMPLIANCE PROCESSES

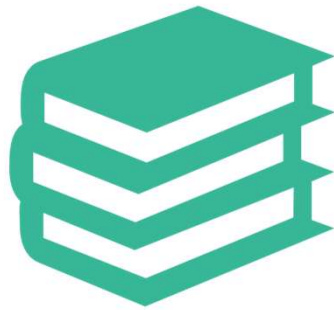
Atherstone Compliance follows meticulous compliance processes, which include rigorous assessments, thorough monitoring, and continuous improvement strategies.

Our team is committed to ensure that the clients' compliance programs are robust, up-to-date and aligned with regulatory changes.

▶▶ Atherstone



Comprehensive Compliance Services



Range of services offered by Atherstone Compliance include compliance assessments, policy development, risk mitigation strategies, training programs, regulatory reporting and ongoing support monitoring.



The division through our partner affiliates has the capability to provide end-to-end compliance solutions that encompass all aspects of regulatory requirements.

Technology and Innovation



Atherstone Compliance Team is exposed to emerging digital trends and integrates technology and innovative solutions to streamline compliance management.



The division leverages advanced tools, automation and data analytics to enhance efficiency, accuracy, and real-time monitoring of compliance obligations.



Global Reach and Network

Atherstone Compliance team has access to global industry experts, regulatory specialists and legal advisors.

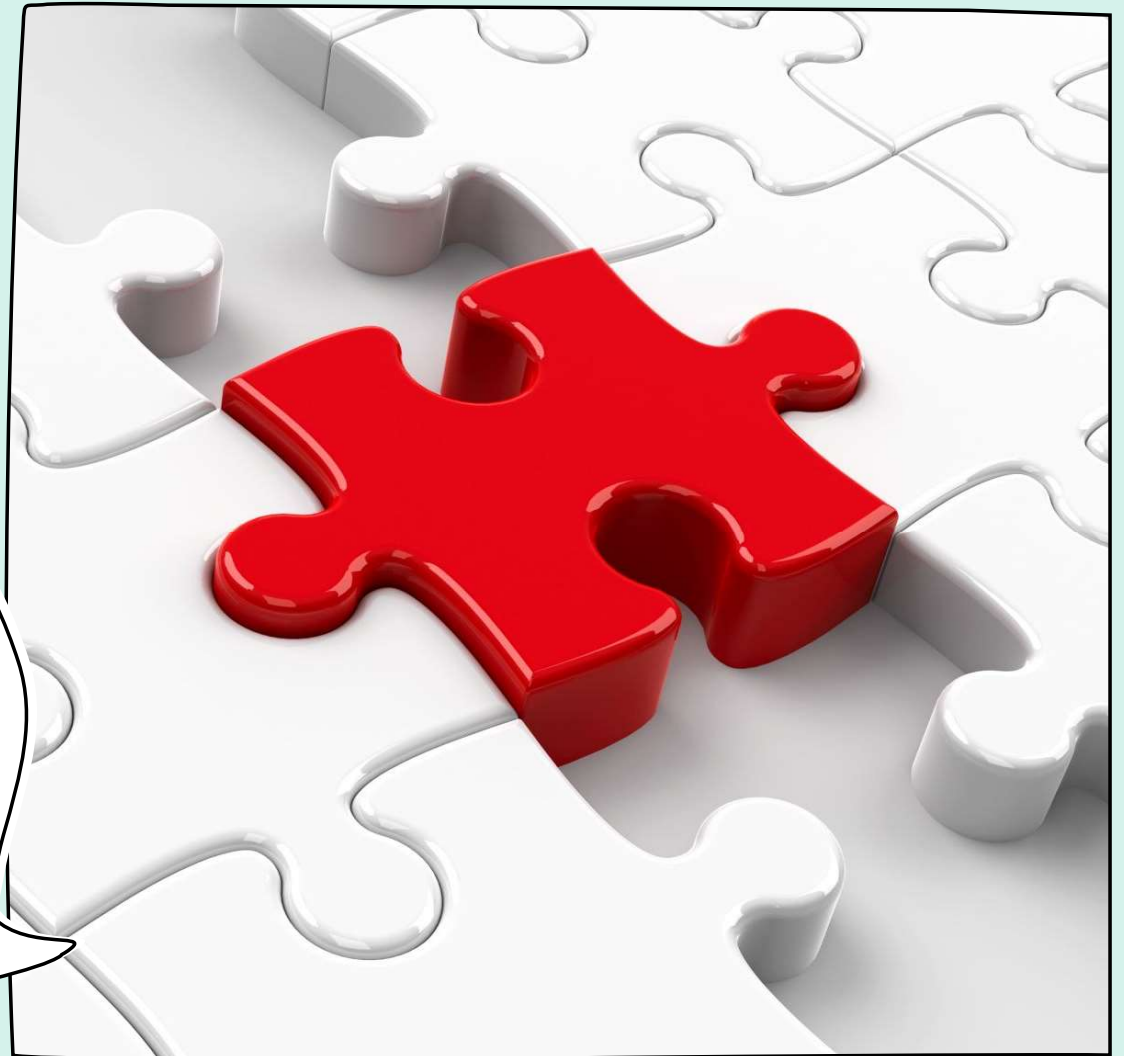
We provide localized expertise and support clients operating in multiple jurisdictions through alignment with right partners ensuring compliance with both regional and global regulations.



Client-Centric Approach

Atherstone Compliance's client-centric approach helps understand clients' unique needs and recognises building long-term partnerships is a top priority.

The division is committed to provide responsive and personalized service, ensuring clients receive the attention, guidance and support you deserve.



Time to Act

It's Time for Action.

Atherstone Compliance invites potential clients to partner with us to experience the best of Compliance Services.

Our ability to deliver exceptional compliance solutions, mitigate risks and support business growth, ultimately helps clients achieve compliance excellence and peace of mind.

Connect NOW.



CONTACT US TODAY TO EMBARK ON A JOURNEY OF
COMPLIANCE EXCELLENCE WITH ATHERSTONE COMPLIANCE.

EMAIL US AT
COMPLIANCE@ATHERSTONE.IN